

Instruction Manual

FX1□-PH (Voltage Input·Soft Variable Type)
 FX2□-PH (Voltage Input·Soft Variable Type)
 FX3□-PH (mV Input·Soft Variable Type)
 FX4□-PH (mV input·Soft Fixed Type)
Peak Holder

JUXTA

1. INSPECTION

This instrument has been thoroughly tested at the factory before shipment. When you receive it, visually inspect it for damage and check the accessories.

1.1 Model number and specification check

Check to see the model number and specifications on the nameplate attached to the front cover of the unit are as ordered.

1.2 Contents of the instruction manual

This instruction manual provides instructions on mounting, external wiring and maintenance.

2. GENERAL

2.1 Soft variable type (FX1□, FX3□)

This unit receives voltage or mV signal from transmitter and outputs isolated current or voltage signal holding its peak value. Holding operates when hold instruction input (INPUT 2) is more than 75%.

2.2 Soft variable type (FX2□)

Soft fixed type (FX4□)

This unit receives voltage or mV signal from transmitter and outputs isolated current or voltage signal holding its peak value. Holding operates when hold instruction input (INPUT 2) is OFF (Open).

Accessories:

| | |
|----------------------------|--------|
| Mounting block | 2 |
| Tag number and range label | 1 each |
| Mounting screw M4 | 2 |

3. MOUNTING METHOD

JUXTA signal conditioners can be mounted on rack, wall or DIN rail.

3.1 Rack mounting

Use panel (FRK-16) and install it on an angle as shown in Fig.1. This is a convenient method for high density mounting of the unit on 19-inch rack panel. (See Fig. 6)

3.2 Wall mounting

Use panel (FRK-16) to mount the unit as shown in Fig. 2 or directly mount it on the wall (See Figs. 6 and 7 for mounting dimensions)

3.3 DIN rail mounting

Insert DIN rail into the upper of DIN rail groove on the rear of the unit and fix the rail with the slidlock at the lower of the unit as shown in Fig. 3.

3.4 Angle mounting

In case of single unit mounting, refer to Fig. 5 for its mounting.

3.5 Mounting block installation and removal

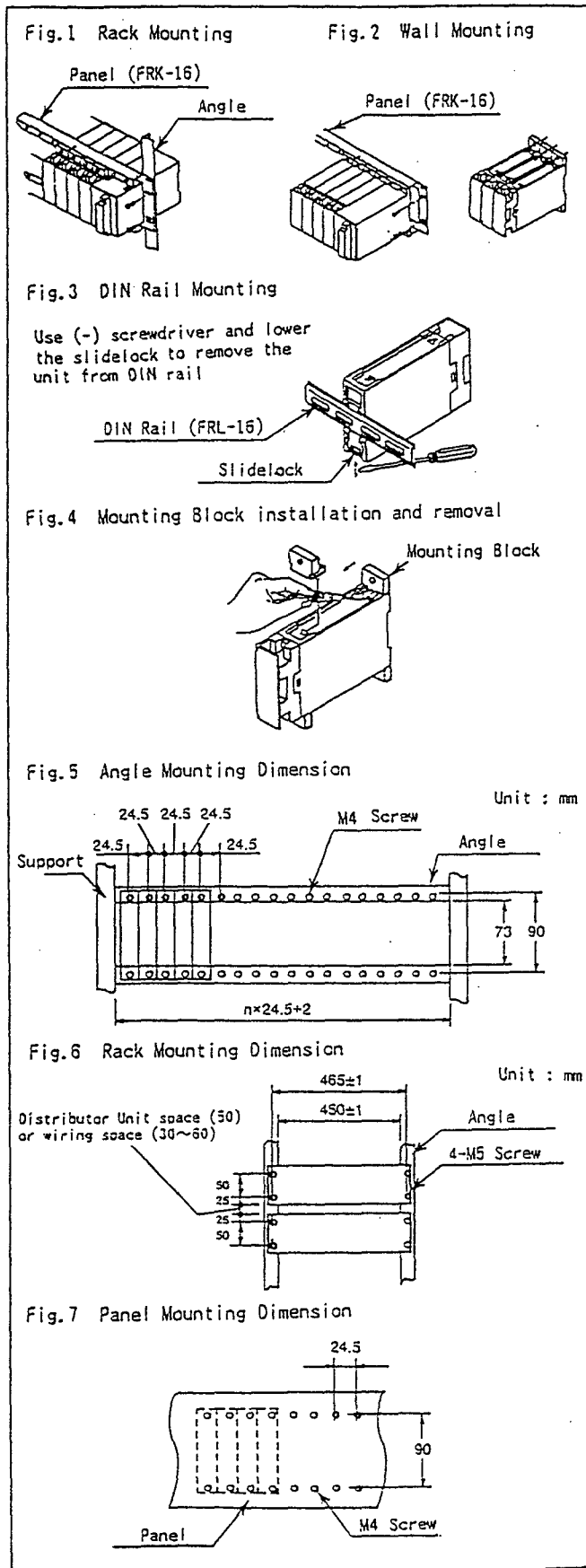
Insert mounting block into the groove of the unit as shown in Fig. 4 and slide it until it is locked with the stopper. To remove it, lift up the mounting block stopper with screwdriver (-) and slide it along the groove.

4. EXTERNAL WIRING

Open the terminal cover of the unit.

Wire should connect to M4 screw terminal. Flexible twisted wires and durable round crimp-on terminals (JIS C2805) are recommended to be used.

● Signal cable having more than 0.5mm² and power cable having more than 1.25mm² of nominal cross-sectional area of conductor are recommended.



4.1 Wiring

- ① See Fig. 8 for terminal arrangement.
- ② As for soft variable type, connect Ch1 input voltage signal cable to terminals 2(+), 3(-) and Ch2 input voltage cable to terminals 1(+) and 3(-) of the unit.
As for soft fixed type, connect input voltage signal cable to 2(+), 3(-) and input contact cable to 1(+) and 3(-).
- ③ Connect output signal cable of the unit to its terminals 4(+) and 5(-).
- ④ Connect 24V DC power cable to terminals 6(+) and 7(-) of the unit. (See Figs. 9 & 10)

5. ITEMS TO BE CHECKED BEFORE TURNING THE POWER SWITCH ON

- ① Make sure that 24V DC power cable of the unit is connected to the correct polarities (+), (-).
 - ② Confirm that the external wiring to the terminal board is correct.
 - ③ Check that the mounting, ambient temperature, humidity, dust and vibration are normal.
- Confirm the above items before turning the power on. The unit needs 5 minutes warmup to meet its specified accuracy level.

6. OPERATION CHECK

(Caution)

Carry out the following calibration after warming up the instruments for more than 5 minutes.

6.1 Calibration equipment

- Voltage/Current Generator (Yokogawa Model 7651 or equivalent) 1
- Voltmeter (Yokogawa Model 7551A or equivalent) 1

6.2 Check method

- ① Connect each equipment as shown in Figs. 11 and 12.
- ② Input/output characteristic check
Make hold instruction input less than 25% (Fig. 11) or ON (Close) (Fig. 12).
Use Voltage/Current Generator and apply signal equivalent 0, 25, 50, 75 and 100% of input span to Ch1. Check that corresponding outputs are within specified accuracy rating range of respective output reference values.
- ③ Peak hold function check
Make hold instruction input more than 75% (Fig. 11) or OFF (Open) (Fig. 12).
Check to see the output corresponds to peak value of input thereafter.
● If output signal is out of tolerance in case of ②, adjust it with Handy Terminal (JHT-100 or JHT200). For adjustment, refer Instruction Manuals of Handy Terminal.
(JHT200 : IM JF81-02E, JHT-100 : IM JF81-01E)

7. SET VALUE INPUT THROUGH HANDY TERMINAL

As for soft variable type, input range can be changed through Handy Terminal.
Make Handy Terminal to SET mode, and set voltage corresponding 0% input on ZERO (B10) and span voltage on SPAN (B11).

Fig.8 Terminal Arrangement

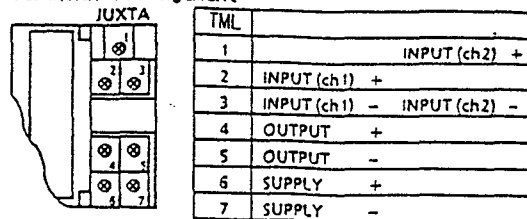


Fig.9 Wiring Diagram (Soft Variable Type)

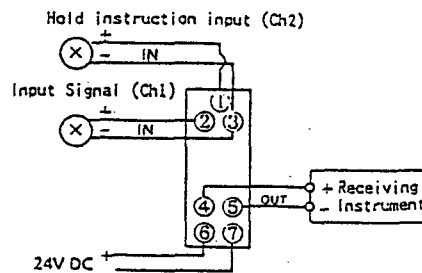


Fig. 10 Wiring Diagram (Soft Fixed Type)

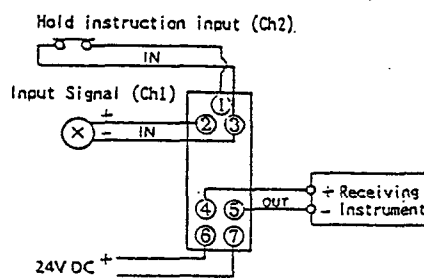


Fig.11 Wiring of Calibration Equipment (Soft Variable Type)

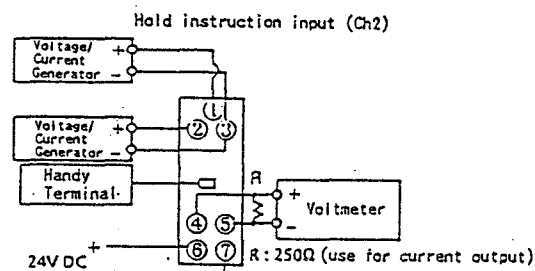


Fig.12 Wiring of Calibration Equipment (Soft Fixed Type)

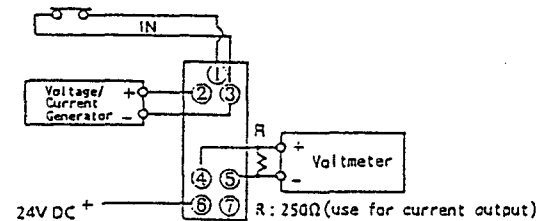
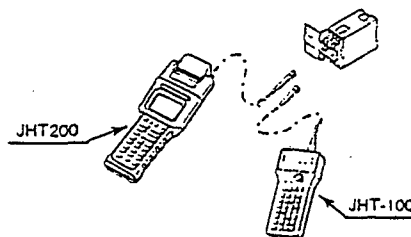


Fig.13 Connection to Handy Terminal



PARAMETER LIST

| NO. | ITEM | TITLE DISPLAY | DATA DISPLAY |
|-----|-----------------------------|---------------|----------------------------------------------------|
| 01 | Model | MODEL | □□□□*□ |
| 02 | Tag No. | TAG NO | 16 Alphanumerics |
| 03 | Self Check | SELF CHK | Good or Error |
| A00 | Display Item | DISPLAY | |
| A01 | Input 1 | INPUT 1 | □□□□.□V/mV |
| A02 | Output | OUTPUT | □□□.□% |
| A03 | Status | STATUS | FF (Hexagonal 2 digits) |
| A04 | Rev No. | REV NO | n.nnn (n : Rev No.) |
| A05 | Load | LOAD | □□□.□% |
| A06 | Input 2 | INPUT 2 | □□□□.□V/mV |
| A07 | Buffer 1 | BUFFER 1 | □□□.□% |
| A08 | Buffer 2 | BUFFER 2 | □□□.□% |
| A09 | Buffer 3 | BUFFER 3 | □□□.□% |
| B00 | Set Item | SET | |
| B01 | Tag No.1 | TAG NO.1 | 8 Alphanumerics (1st half 8 characters of Tag No.) |
| B02 | Tag No.2 | TAG NO.2 | 8 Alphanumerics (2nd half 8 characters of Tag No.) |
| B03 | Comment 1 | COMMENT 1 | 8 Alphanumerics |
| B04 | Comment 2 | COMMENT 2 | 8 Alphanumerics |
| B07 | Input Type *1 | INP TYPE | Select from LL/L/H/HH |
| B10 | Zero Point | ZERO | Numeric Data |
| B11 | Span | SPAN | Numeric Data |
| B12 | Burnout *1 | BURN | Select from OFF/ON |
| B13 | Setup Error | SET ERR | GOOD/ERROR |
| B20 | Program *2 | PROGRAM | Inter-company Setup Item |
| B21 | Program *2 | PROGRAM | Inter-company Setup Item |
| ≡ | ≡ | ≡ | ≡ |
| B48 | Program *2 | PROGRAM | Inter-company Setup Item |
| B49 | Program *2 | PROGRAM | Inter-company Setup Item |
| C00 | Adjust Item | ADJUST | |
| C01 | 0% Output Adjust | OUT 0% | Numeric Data (±10.00) |
| C02 | 100% Output Adjust | OUT 100% | Numeric Data (±10.00) |
| C03 | Wiring Resistance Adjust *1 | WIRING R | RESET/EXECUTE |
| C04 | 0% input Adjust *2 | IN 0% | |
| C05 | 100% input Adjust *2 | IN 100% | |
| C11 | Fixed Constant *2 | CONST | Numeric Data |
| C12 | Fixed Constant *2 | CONST | Numeric Data |
| ≡ | ≡ | ≡ | ≡ |
| C40 | Fixed Constant | CONST | Numeric Data |
| C41 | Fixed Constant | CONST | Numeric Data |

*1 Display only FX3□-PH
 *2 Display only. Don't use

Subject to change without notice for grade up quality and performance.

YOKOGAWA 
Yokogawa Electric Corporation

Network Solutions Business Division
2-9-32, Nakacho Musashino-shi, Tokyo, 180-8750 Japan
Phone: (81)-422-52-7179 Fax: (81)-422-52-6793